

FEATURES



Push Back Recline



Fixed Arms



350 lb. Weight Capacity

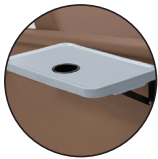


Pedestal Feet or
3” Casters

SPECIFICATIONS

Weight capacity	350 lb.
Back height (from floor/seat)	P=47", C=47.5"/32"
Overall width (table down/up)	32.5"/43"
Seat width 24"	24"
Seat height/depth	P=18.5", C=19"/19.5"
Arm height (from floor)	P=27.25", C=27.75"
Overall upright depth	41.25"
Trendelenburg depth	72"

ACCESSORIES



Side Tables